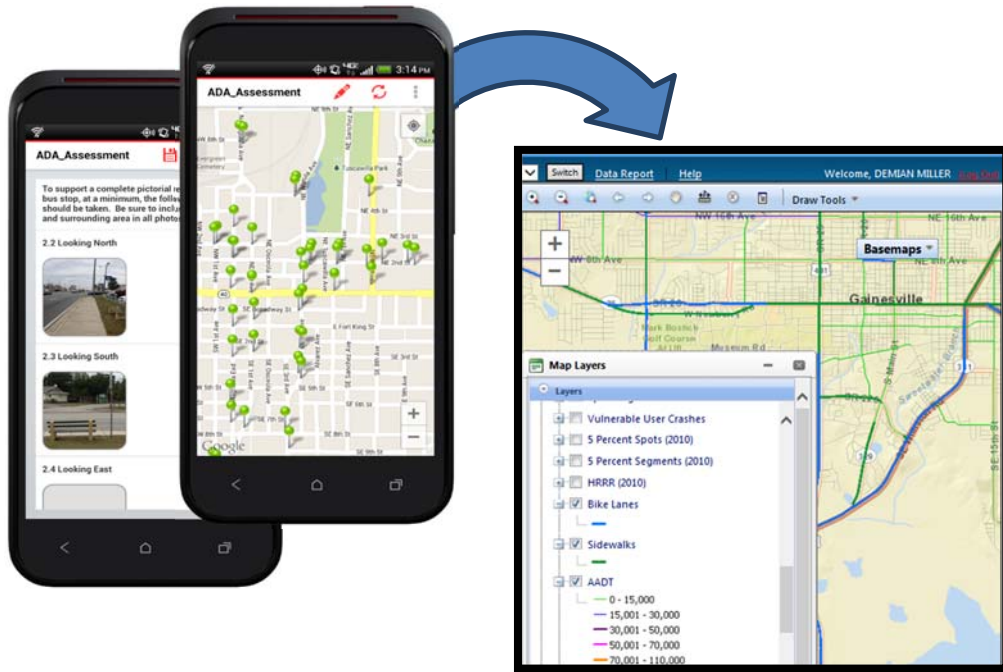


Mobile Data and Web-Based GIS



Tindale Oliver continually works to develop new and invest in current technologies to improve the efficiency, accuracy, and completeness of transportation planning and engineering projects.

Among our most recent efforts is the development of mobile data collection applications that can be used collect inventory data, support road safety audits, and perform on-board surveys and other information gathering. As data are captured in the field, they are uploaded continuously to Tindale Oliver's servers, where they are processed and can be published using web-based GIS mapping services.

Tindale Oliver maintains web-based GIS mapping data systems for traffic crash data, traffic counts, utility data, and traffic studies archives. In addition we use Microsoft SharePoint to provide client project sites that allow for collaborative document editing and publishing of project schedules, scopes, and other project management materials.

Our staff include several in-house web designers who routinely develop project websites for public use to enhance and expand the public engagement process for higher-profile planning projects.